

# Interactive & Immersive Spaces

Catherine Carter, Deicy Gomez, Srijani Prekki

# OVERVIEW



In the first two phases of the project, our group learned that Englewood is rich in stories, memory, and pride—but often underserved when it comes to how those stories are told and who controls them. Through conversations, counter-mapping, and community documentation, it became clear that residents wanted more than just beautification—they wanted spaces that hold memory, where people could feel represented, safe, and heard.

We also noticed that while murals are common, most are passive—meant to be looked at, not engaged with. There was a clear opportunity to reimagine how public art in Englewood could become more immersive, more participatory, and more reflective of the actual people who live there.

# QUESTIONS

## Cultural Insight

What stories from Englewood deserve to be heard and preserved, how selective should this process be?

## Design Challenges

How can augmented reality reimagine how we experience public memory?

## Interaction Possibilities

How can users get a notification of the AR animations if they're within the proximity of the lot?

## Interpretive Risks

How can animations with simple abstract shapes tell a story?

## The vision

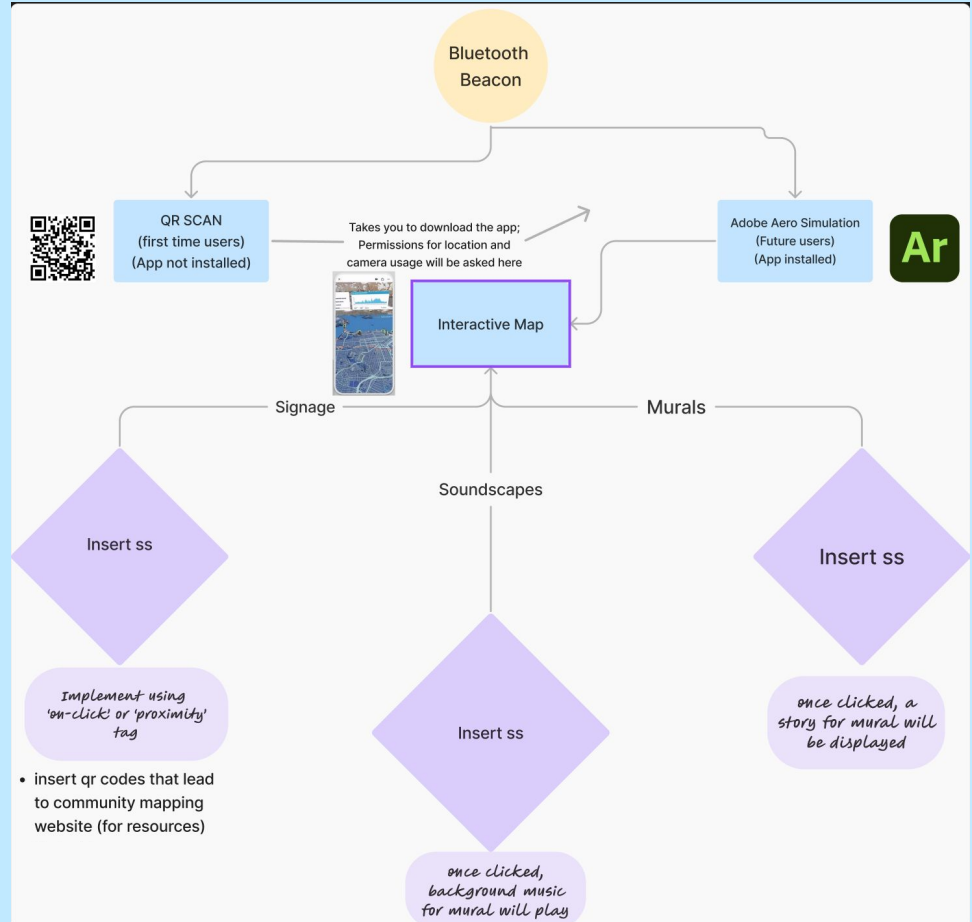
Our vision was to create an immersive public space that uplifts the voices and stories of Englewood through technology, art, and intentional design. Echo Grove reimagines the traditional mural as something living and interactive, where augmented reality, soundscapes, and sculptural seating invite people to listen, reflect, and connect with the community's history and future.

---

# The Idea

# Flowchart for Mural Soundscape Prototype : Echo Grove

This flowchart shows how visitors interact with Echo Grove murals through Bluetooth beacons and QR codes. First-time users are guided to the AR app, while returning users are seamlessly connected. Once active, murals trigger soundscapes, music, or stories tied to that artwork. Signage will help guide the experience and make it accessible to all.



# EAC Logo Animation

## EAC logo on Shipping Container

This is what viewers will see on the shipping container. They are then guided to the QR code with instructions for an easy route to viewing an animation of the logo and many other interactive elements at the lot.



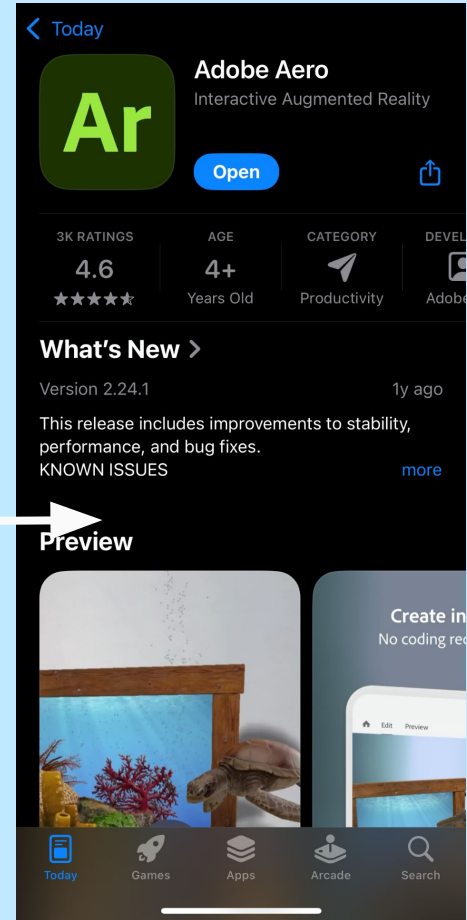
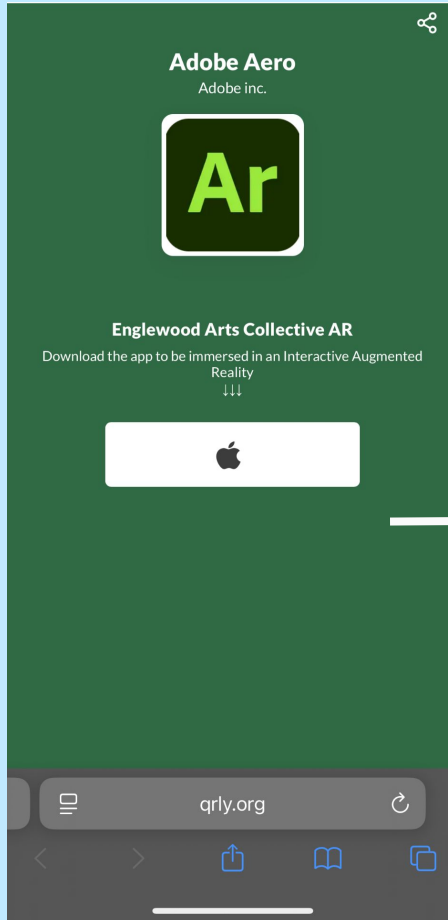
Scan here to see the logo come to life!



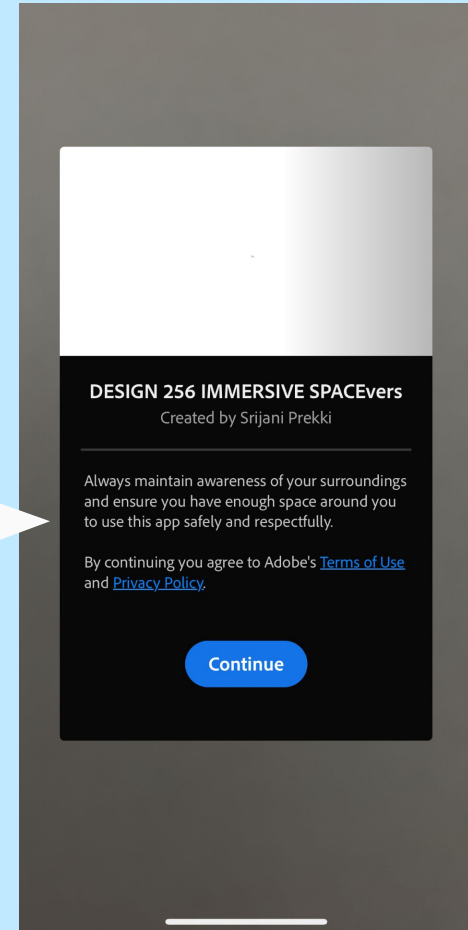
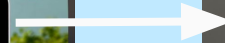
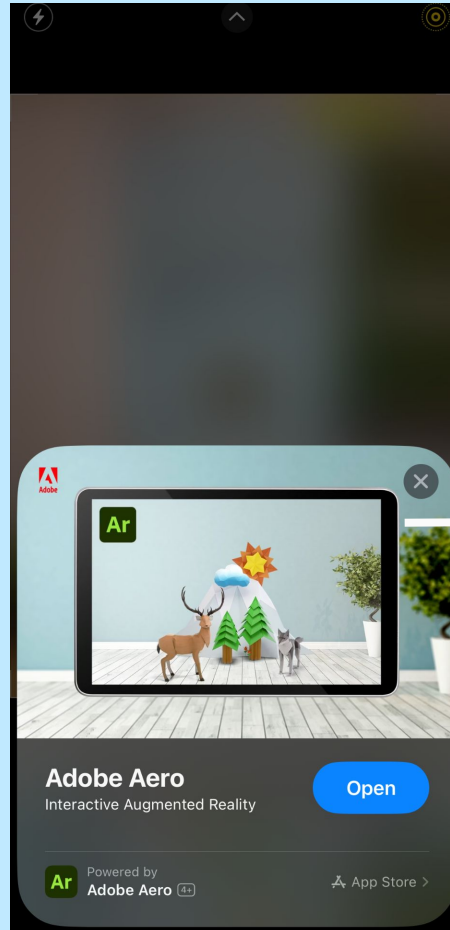
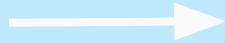


## EAC logo Animation

Viewers are then guided to download the app if not installed already. They are still guided to the app store even if already installed to open the app. Every time after that, users will directly be guided to the simulation.

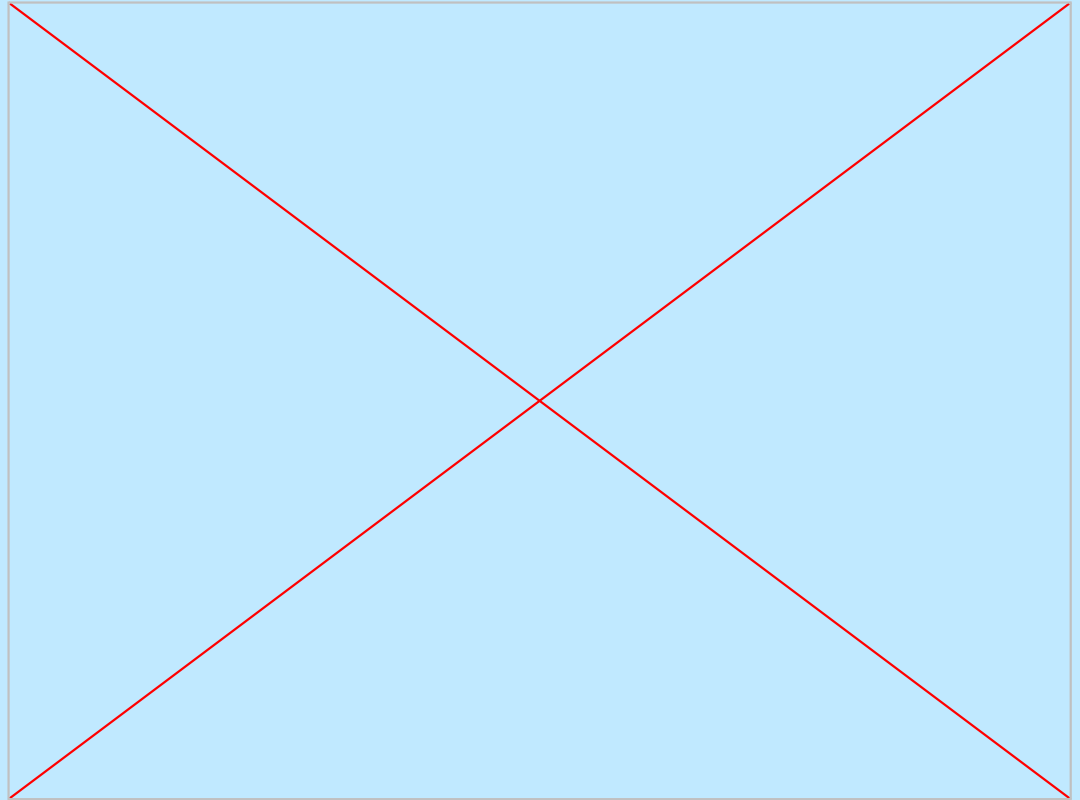


## EAC logo Animation



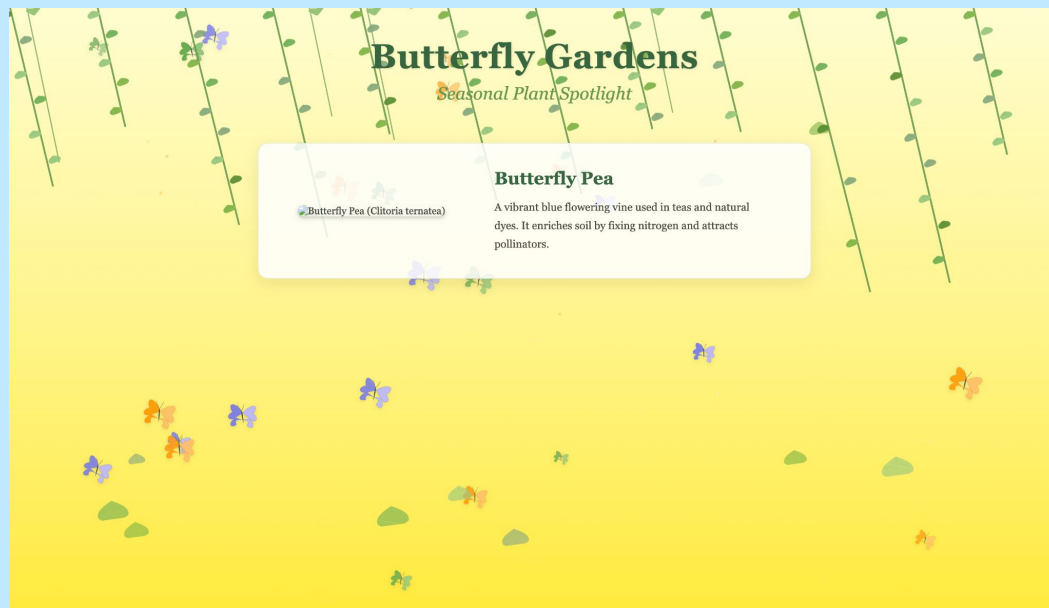
## EAC logo Animation

This animation gives users insight into the meaning and purpose of the Englewood Arts Collective in an abstract method. Single elements from the logo being brought together enforces the idea of collectivity and unity. This concept also ties into EAC's vision of reimagining a space; the canvas starts off blank and is then transformed.



# Website for Butterfly Gardens

The Butterfly Gardens originated as a concept proposed by one of the groups in our class, which we selected to further develop in Adobe Aero. Centered around a butterfly-inspired crop rotation system, the gardens are designed to enrich the soil and support optimal plant growth. This accompanying website can be updated to feature each plant in the rotation and serves as an interactive layer for viewers exploring the project through Aero.

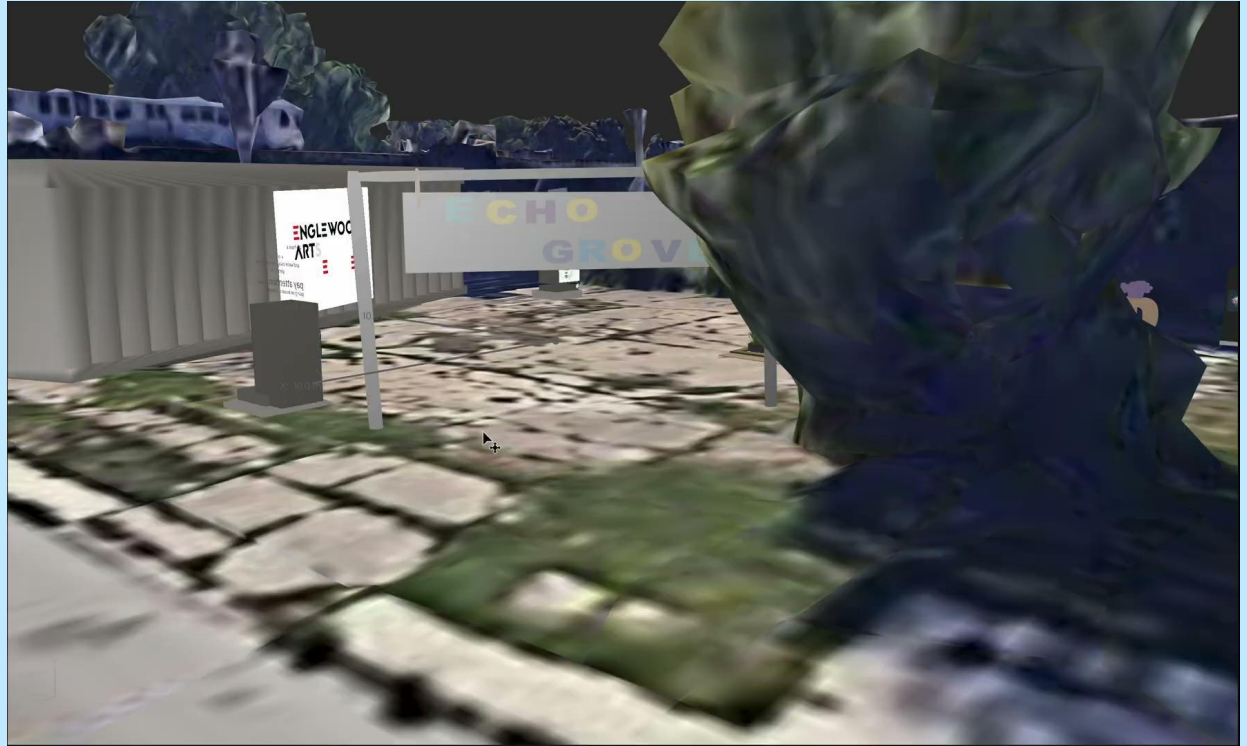


(coded with HTML, CSS, and JS)

# Putting it all Together

## Echo Grove Sign Entrance

Location anchor



# Echo Grove Sign Entrance

First Person POV

“Welcome to Echo Grove: Englewood’s first augmented reality experience. Here, technology and community grow together, bringing new life to this space through sound, story, and imagination. Step into a new vision for this lot, imagined, designed, and built for Englewood’s next chapter. Feel it. Hear it. Imagine what’s next.”



# Mural PowerStation #1

Location anchor

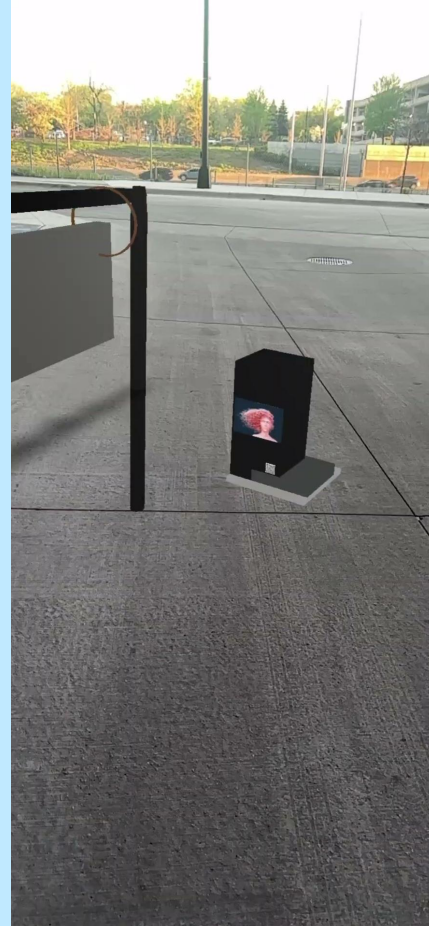




### Mural PowerStation #1

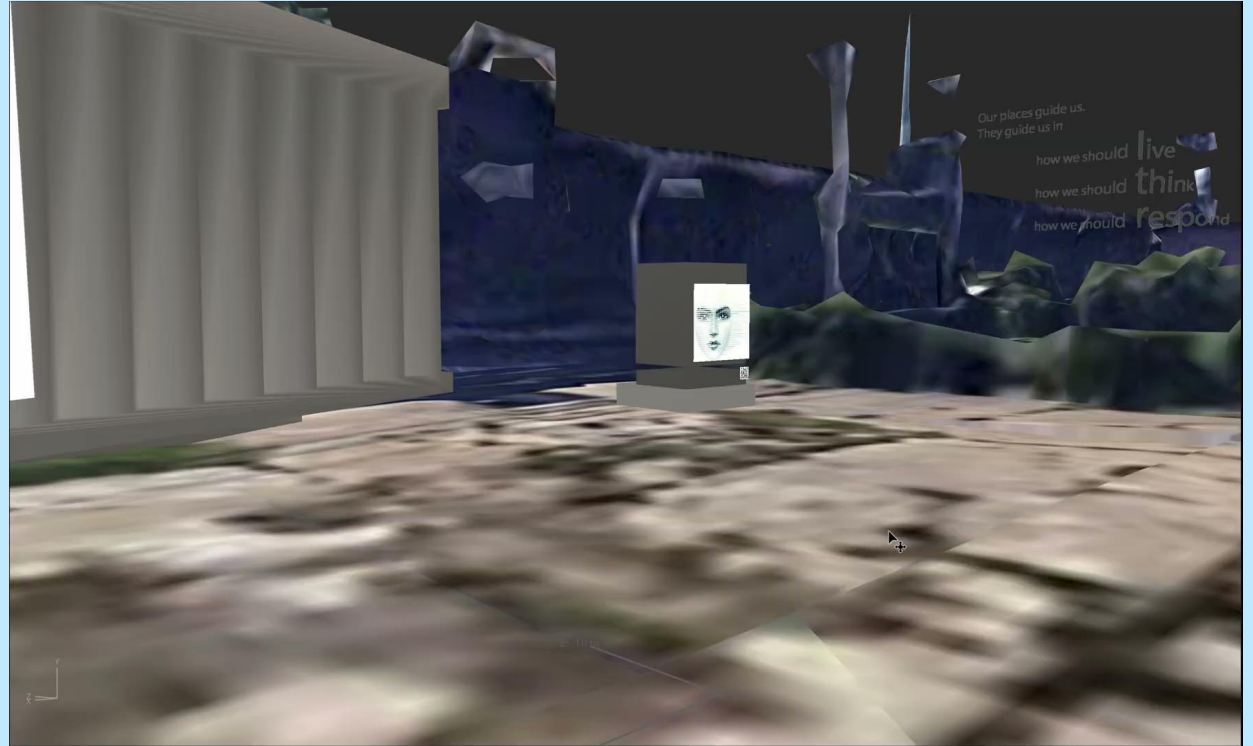
First Person POV

“You’re approaching the Mural Powerstation, where art and energy come together. Here, vibrant murals tell stories of growth, community, and connection. Need a charge? Power up your phone or device right here. To hear the full story behind the murals, just tap the QR code you see in the AR simulation.”



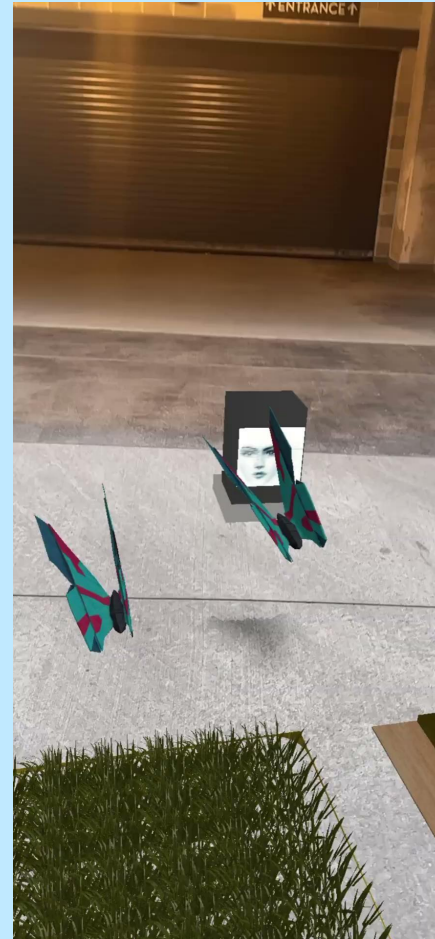
## Mural Power Station #2

Location anchor



## Mural PowerStation #2

First Person POV



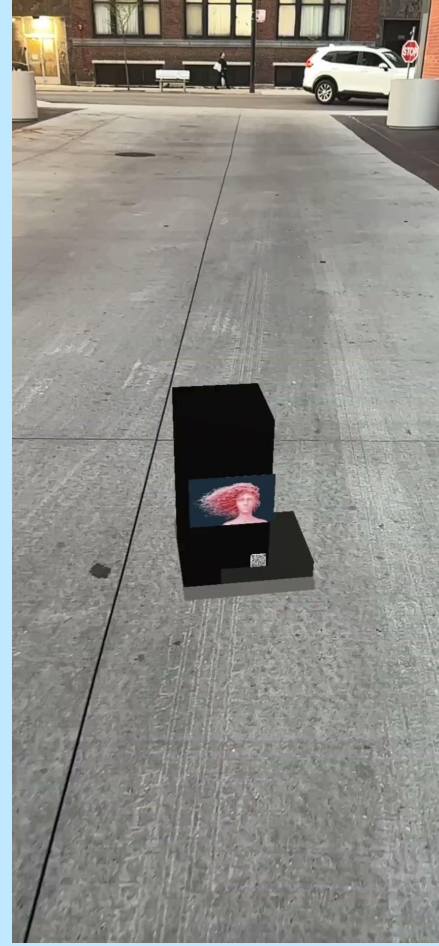
## Mural Power Station #3

Location anchor



## Mural PowerStation #3

First Person POV



# Quotes

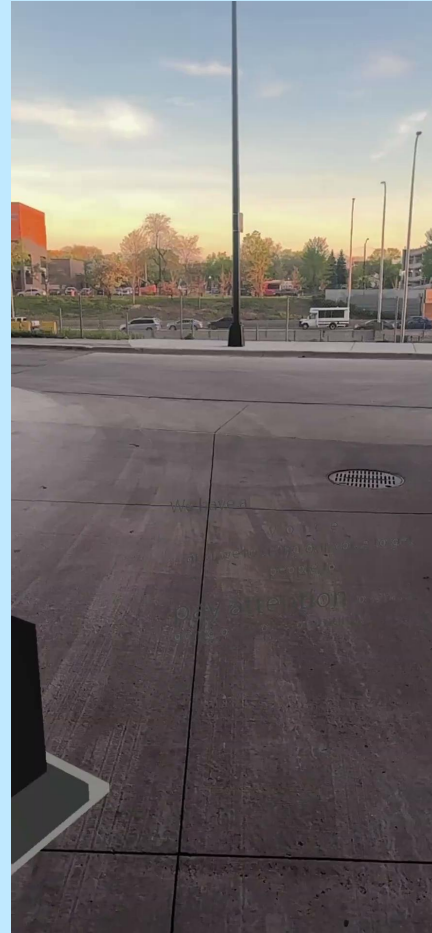
Location anchor



## Sketches

## Quotes

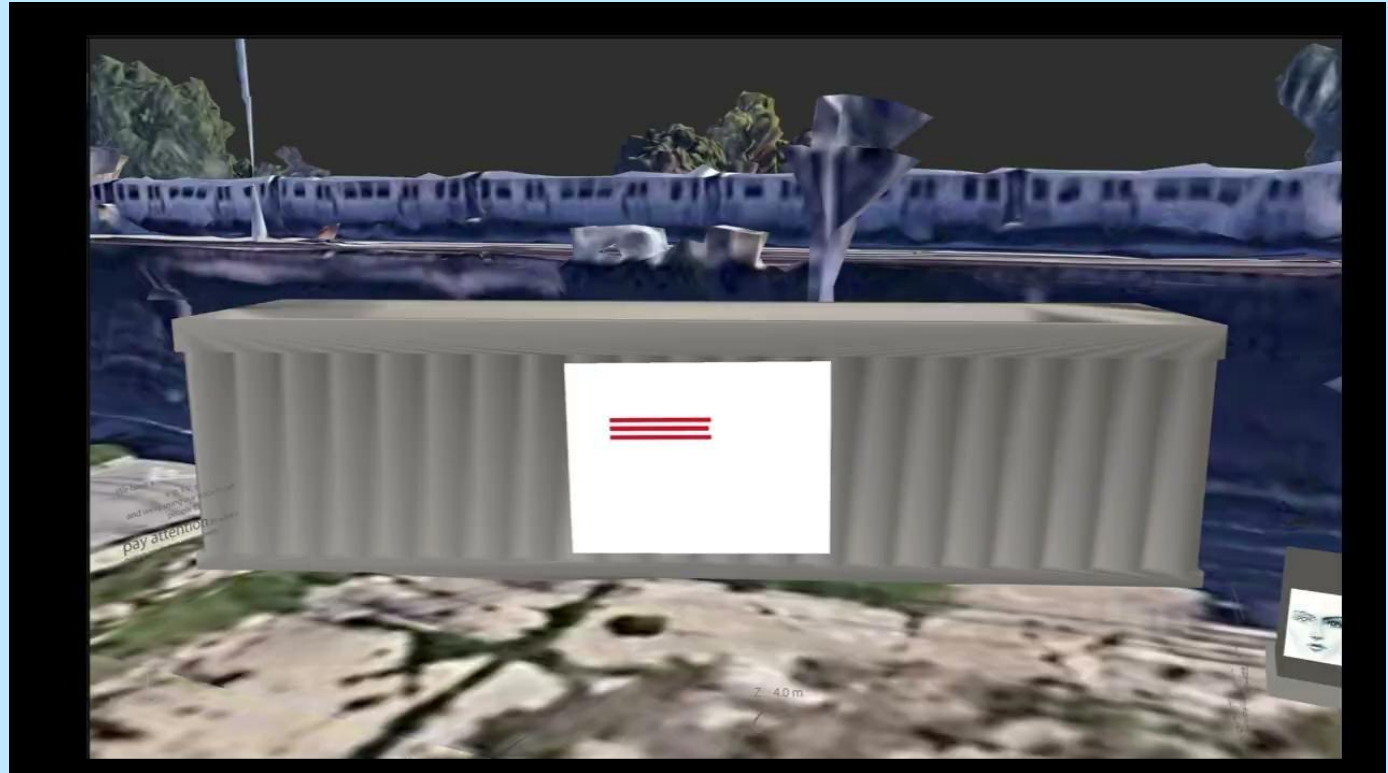
First Person POV





# Shipping Container

Location anchor





# Shipping Container

First Person POV

“You’re now at the EAC Shipping Container, a canvas for creativity and community. Here, the Englewood Arts Collective shares its vision through animation, celebrating the spirit and voices of Englewood. As you walk through, watch for the quotes nearby — they grow and come to life, just like the community they represent.”



## Butterfly Gardens

Location anchor

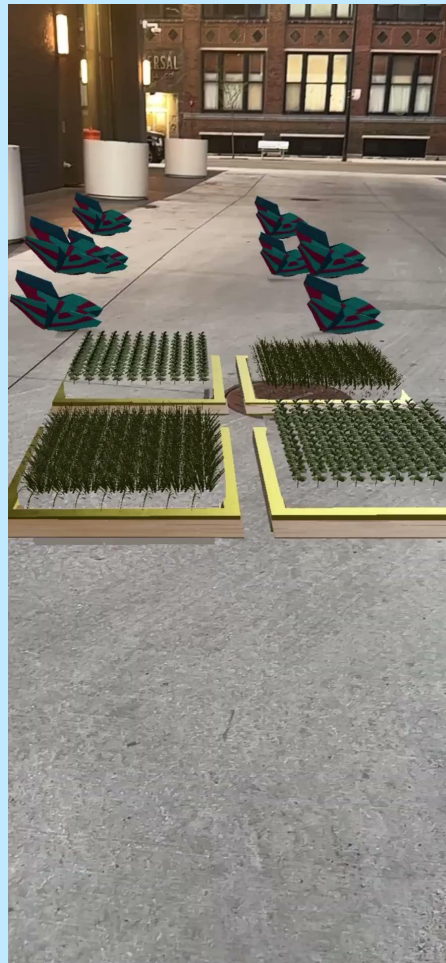


# Butterfly Gardens

First Person POV

“This is the Butterfly Gardens, a space where plants are rotated over time to keep the soil rich, healthy, and full of life.

Glance down at the thriving earth.  
Glance up at the fluttering sky.  
Here, everything grows in motion”



# Possible Next Steps

- **Integrate a Bluetooth beacon system** to passively notify visitors when they are near Echo Grove's interactive mural or sound seats
- **Refine AR interactions** and transition from Adobe Aero to a more flexible platform for full deployment (WebAR or custom viewer).
- **Prototype the beacon-user flow**, including signage and onboarding instructions for first-time visitors
- **Test accessibility features**, including multi-language support and sound alternatives for deaf/hard-of-hearing users

## Work Cited

Demo sounds used for Power Station:

<https://www.youtube.com/watch?v=5ONsjlbOX0s>

[https://www.youtube.com/watch?v=2l2AX-I\\_H5Y](https://www.youtube.com/watch?v=2l2AX-I_H5Y)

[https://www.youtube.com/watch?v=I8\\_a-iWOT2U](https://www.youtube.com/watch?v=I8_a-iWOT2U)

Research for Englewood Community Quotes

Browne, Simone Estelle. *“That Place They’re Rebuilding”: Investment and Hope in Chicago’s Englewood Neighborhood*. 2019. University of Chicago, Bachelor’s thesis. Knowledge@UChicago, <https://knowledge.uchicago.edu/record/2453>.



# Thank you!

---